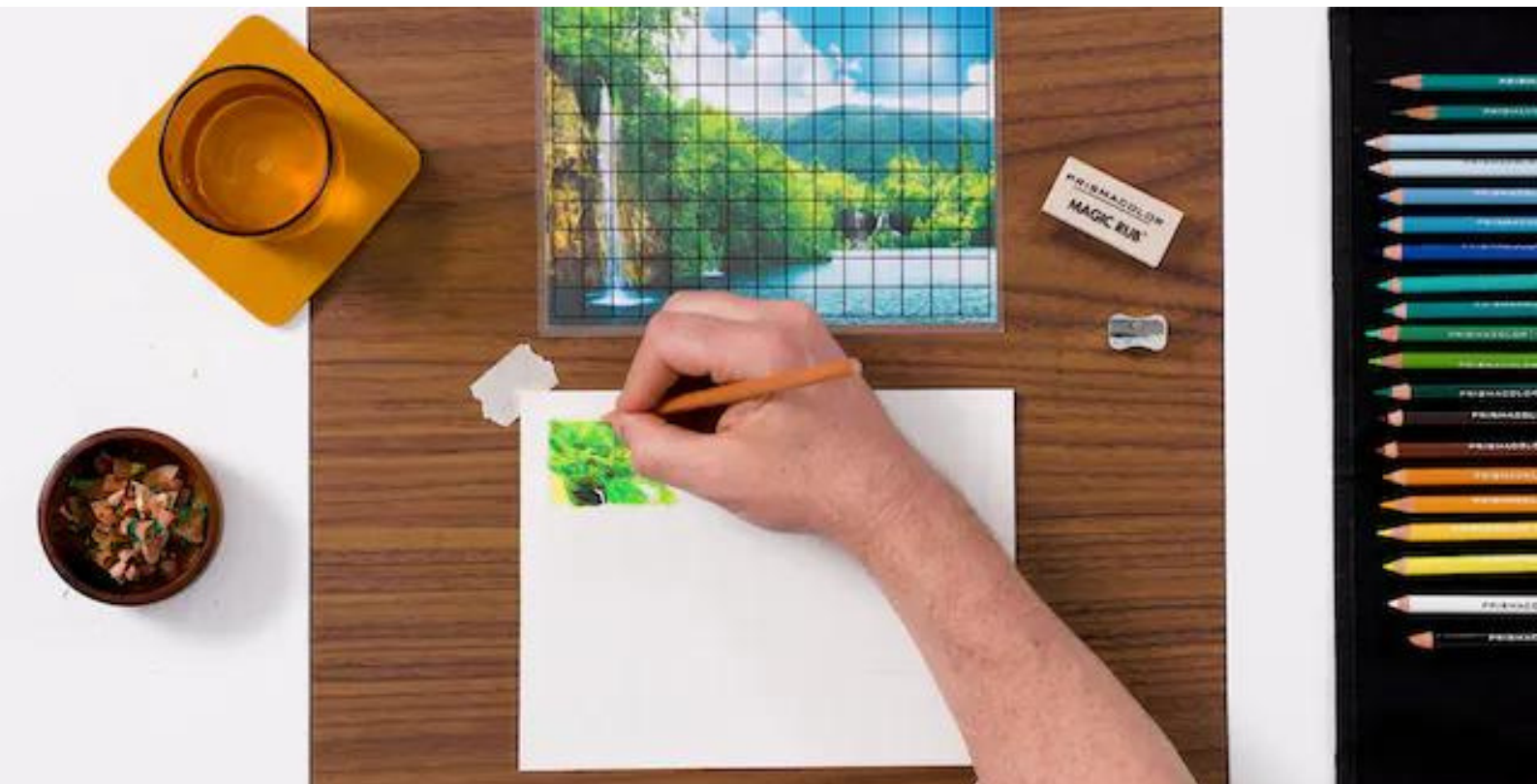




Newsletter



Newsletter Everycolor

JANUARY 2023

A whole new year beckons, as empty and promising as a beautiful drawing book's first page. We have many plans for 2023 and we hope you do, too.

Team Everycolor wishes you lots of reading pleasure as well as inspiration from this news letter's fourth edition. Hope you enjoy it!

Kind regards from Monique, Erik, Joke and Joyce.

Inhoud:

Plans 2023 • P2

Special Offer • P3

New product • P3

Working with... • P4

New Articles • P5



Planning and plans

WE LOOK FORWARD TO 2023

The first main event is the big art materials fair in Frankfurt. Naturally we aspire to find the best brands and of course new editions of the brands already in stock.

Our findings will be reported and displayed on Facebook and Instagram where you'll be kept up to date on what and who we'll have run into.

Furthermore, we are going to team up with pastel artist Loes Botman who will be giving workshops! Unison are her favourite pastels and as it happens, ours too...

And on March 25th Nicky Saliha from Faber Castell will be facilitating pastel pencil workshops. The workshops are condensed: duration is about 1,5hrs. Subscribe to one [via the following link](#).

Apart from following a workshop or two you are of course most welcome to visit the sprawling studio in Ammerstol (by appointment only, so kindly let us know if you wish to drop by). Our team members will provide you with sound advice, you'll have a chance to try out whatever tools or materials you're interested in, or you can just browse for a bit. Picking up placed orders can be done swiftly as well.

In general, the studio is open for visits on Wednesdays, Fridays and Saturdays. Placing an order may be done up front and we'll have them ready for you to pick up, or you can select items while visiting.

Appointments can be made by phone (06-17772021) and email (info@everycolor.nl).

Special Offer

BLACK EDITION

Finding a decent budget pencil has taken us years, but there is one available now: the Faber Castell Black Edition. The pencil is nice and soft with a solid colour offset. The Black Edition pencils have bright colours which also come to fruition on black paper.

The ergonomic form and good wood and glue quality makes them very suitable for children as well. They are available in sets of 12, 24, 36 and 50 colours. The action code '2023blackedition' will give you a 10% discount on all sets.



Neocolor

Caran d'Ache is a brand with a strong reputation when it comes to drawing materials. The Neocolor 2 wash pastels are worthy of your attention because these crayons are so versatile. They have an enormous colour potential and are made with good pigments which hold well in light, which makes them useful in a multitude of applications.

The Neocolor are water-soluble so that you may apply them in a dry state and create an aquarel effect by using a wet brush afterwards. Alternatively, you use the brush to extract some dye from the crayon directly. Using them dry works just as well though, and it is possible to create nicely covered layers and allow the colours to mix to your liking.

Using Neocolor is not only possible on (black) paper, but also on wood, textile etc. And for those who do scrap-booking and/or use stencils this product is indispensable! For an extensive instruction video, [use the following link](#).



Working with

MASKING LIQUID

Masking liquid is mainly used when applying aquarel paint and gouache.

It is a liquid made from latex and is available in bottles with a very narrow spout ([made by Sennelier](#)), as well as in the form of a pen ([made by Molotow](#)). It also comes in bottles without a spout.

In the latter case you apply it by using an old brush. The downside of this method is that it makes it virtually impossible to clean the brush afterwards, because of the problematic combination of liquid rubber and hair (picture having bubble gum stuck in your hair).

Masking liquid is meant to maintain the white and lighter-coloured parts in your painting without having to physically contain those parts. A big upside to this option is that the rhythm of your brush movements needn't be hampered and do not have to be interrupted: the masking liquid allows for the continuation of painting as if it weren't there. So, take for instance stars in a dark sky, the famous 'glimmer' in one's eye, the nerve lines on leaves or plant stems: all parts of the painting of which you know that they have to remain white. Alternatively you may apply a light colour first, allow it to dry and then add the mask liquid.

Or apply it (after shaking it thoroughly!) on paper before painting, or perhaps after painting a base. Usually it solidifies into a lightblue colour so that it is clear where in the painting you have applied it.

Again, allow it to dry properly and then proceed with your painting. When the last layer of aquarel paint has dried you may remove the mask liquid by rubbing it gently. The rubber will then detach from the base. The smart move would be to not leave the masking liquid on there for too long because if you do, it'll become more difficult to remove. Paper quality is paramount with aquarel painting, but even more important when using masking liquid: inferior quality will result in damaged paper when attempting to remove the liquid.

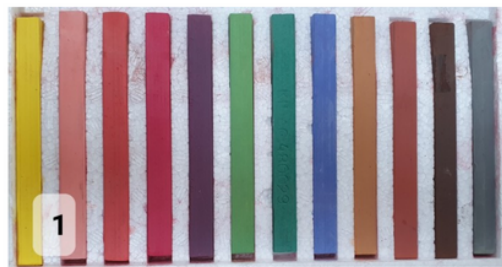
NEW ARTICLES

een small selection



DRAWING FOLDER A3

TFolder made of sturdy plastic. An ideal item for safely storing and transporting all of your drawings. It is provided with two secure clips on the front.



CRETACOLOR VINTAGE

Cretacolor hard pastels vintage series. We've managed yet again to secure a nice batch: this time around it's the Cretacolor hard pastels. Cool sets of 12 crayons have been selected from the available colours.



EMPTY CAN AQUAREL

Empty tin can for 24 cups of aquarel paint. Will always come in handy! Easily filled by colours of your own preference. Capacity is for 24 half cups or 12 full ones.

TECHNIQUE SETS

by Prismacolor

Prismacolor technique sets are available in the subjects 'Animal' and 'Nature', in three levels. Each set comprises of so many Prismacolor Premier pencils that those alone make it worth the investment. On top of that each set has extra's such as graphite pencils, markers, a pencil case, an eraser etc. And you will be given online lessons, accessible from The Netherlands by VPN connection.



NEW ARTICLES

a small selection



DANIEL SMITH GOUACHE

Daniel Smith has recently introduced gouache to the market. Well-known for their quality, they have added 22 colours in 15ml containers, and we expect this range to expand. Gouache is paint based on water, but dries opaquely and provides the painter with beautifully smooth surfaces.



CONTE A PARIS FIXATIVE

Fixative is a spray made to protect drawings which are done by pencil, colour pencil, pastel crayon or crayon. Drawings may be fixated once they are completely finished, or in between various colour layers. Available in 400ml spray cans. It does not faint to yellow.



AMI PALET HERMETIC

This box contains a retrievable 20-section pallet. The lid as well as the box itself may be used as a pallet. Very suitable for water paint and acryl paint. In this box you can keep paint up to 8 days. Dried acryl paint is easily removed as film.

PRINCETON

Floral Brushes

Princeton 5 watercolor brushes set Floral is composed by botanical painter Esther Peck. This set combines watercolor brushes from the three most beautiful series Princeton has to offer: Velvet touch, Heritage, and Neptune. The brushes are made of synthetic hair and have a short stem. They are perfect for botanical and other organic forms in ink, watercolor paint and gouache.

